

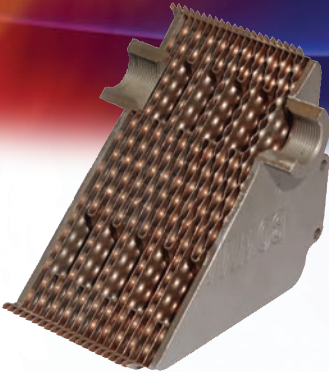
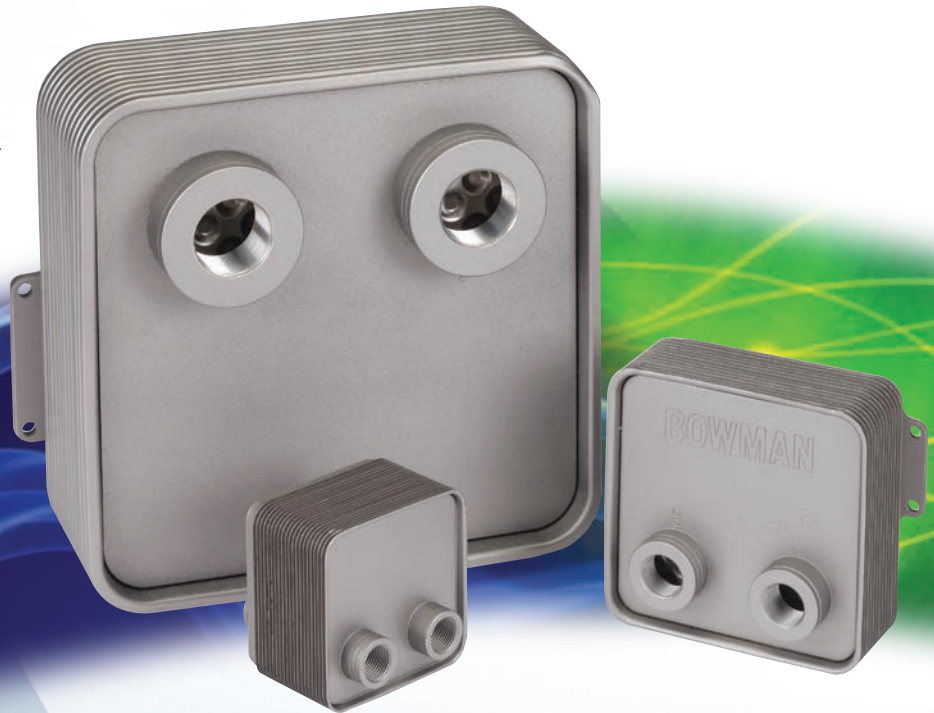
## Non-Storage Calorifiers

The compact, high efficiency, indirect water heating solution

Bowman stainless steel Non-storage Calorifiers provide a simple, but highly efficient method of transferring heat from one independent, low pressure water circuit to another.

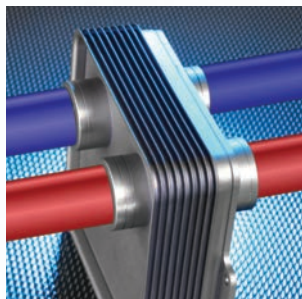
### Compact design

Comprising a series of stainless steel heat transfer plates, plus two outer covers vacuum-brazed together into an integral unit, these heat exchangers can be pump assisted, reducing the required surface area to around 25% less than that required by conventional storage Calorifiers



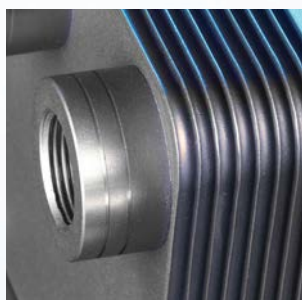
### High efficiency heat transfer

Bowman Non-storage Calorifiers feature uniquely designed, internal baffle plates that create a water flow arrangement which ensures both fluid streams circulate throughout the internal chambers of the heat exchanger, providing the most thermally efficient transfer between circuits.



### Easy in-line installation

The unique design of the internal water flow arrangement enables the inlet and outlet connections to be axially inline, so the unit fits simply and neatly into pipework. For new installations, this feature plus the units compact design can provide substantial space and cost savings.



### High quality construction

Manufactured from high quality 316 stainless steel, to Bowman's renowned standards, these neat, compact Non-storage Calorifiers provide a high quality solution for high efficiency heat transfer.

**BOWMAN**<sup>®</sup>

A World Leader in Heat Exchanger Technology