

Achieving 80% Gen-set efficiency

Simply by recovering waste heat from your engine, overall gen-set efficiency can be **increased to 80%*** ...and beyond!

Up to 50% ** of all fuel input into the gen-set can be recovered and used as valuable heat energy.

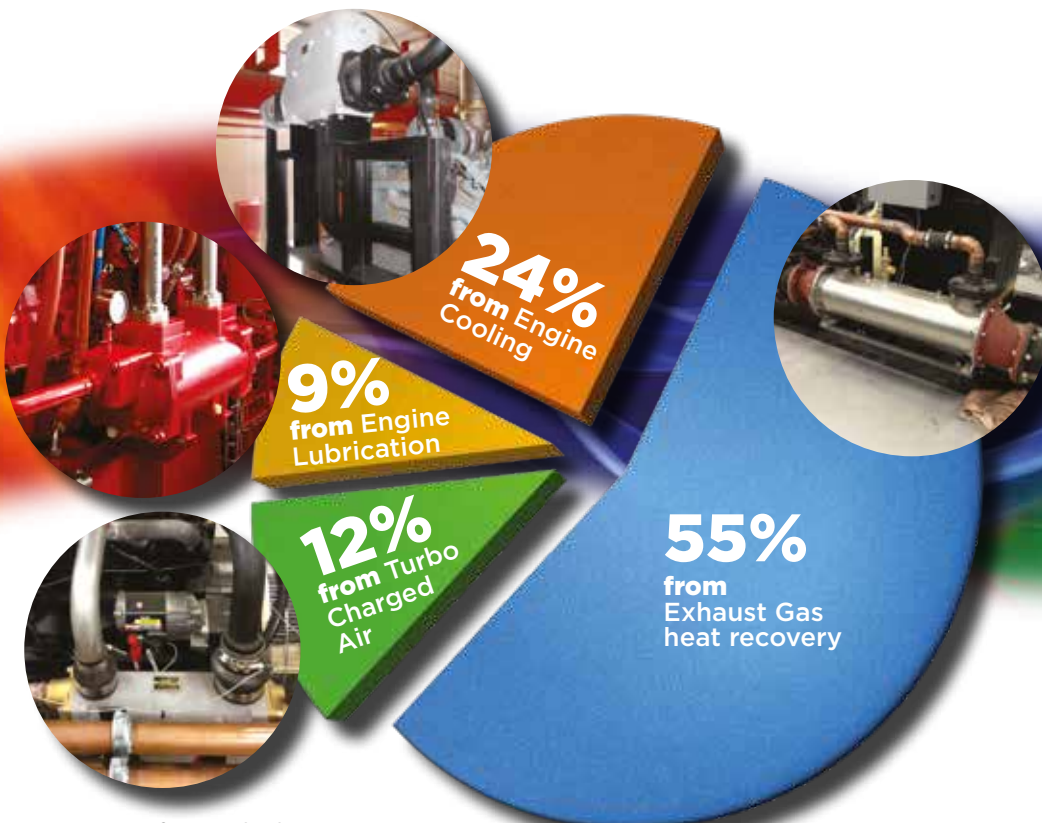
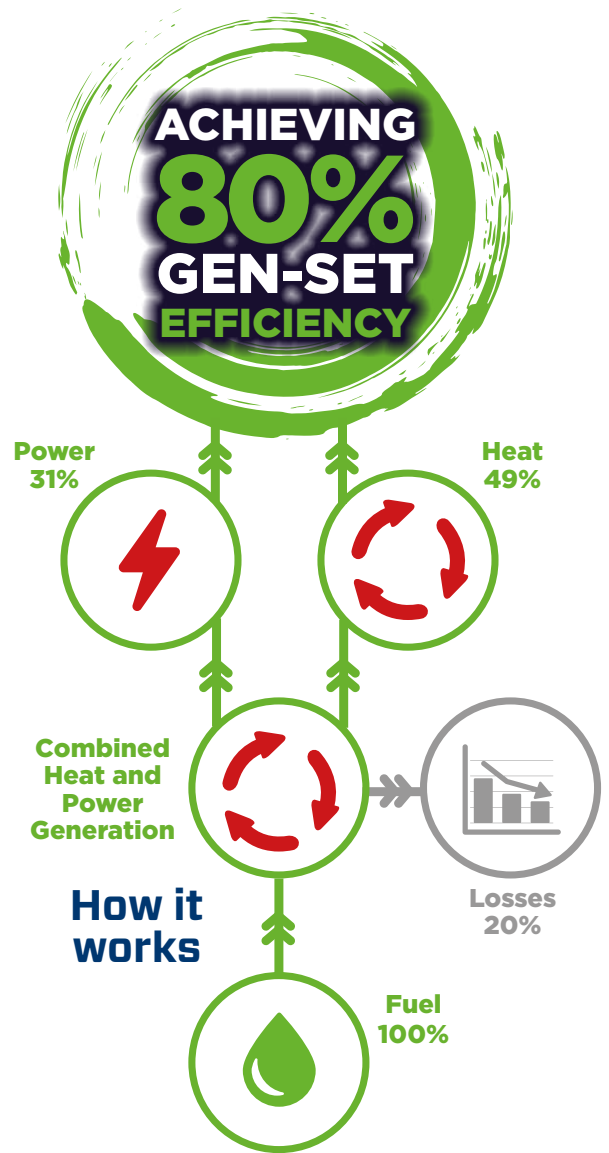
This valuable energy source can be harvested and used at no additional cost, in terms of fuel used or CO₂ generated.

And it can be used for a wide range of domestic, commercial or industrial uses, including district heating and hot water, space heating, process heating, generating electricity, or running a chiller for cooling.

By recovering waste heat energy, overall gen-set efficiency can be increased from around 30% (power only) to 80% (combined heat and power), or even more.

Waste heat recovery potential

Waste heat can be recovered from most areas of an engine powered gen-set, taking it from power only, to a highly efficient CHP facility.



*Association of Decentralised Energy

**Digest of United Kingdom Energy Statistics (DUKES) 2015